



bel etage





bel étage

Detaillierte Beschreibungen der Objekte finden Sie in Deutsch und Englisch auf unserer Webseite www.beletage.com.
Wir senden Ihnen diese auf Anfrage gerne per Post oder E-Mail zu.
Sämtliche Maßangaben sind ungefähre Angaben und dienen der Information.

Detailed descriptions of the objects presented in this catalogue are available for download in German and English from our website www.beletage.com.
Upon request, we will also be pleased to send you these descriptions by post or email.
All measurements are approximate and for information only.

Die Deutsche Nationalbibliothek verzeichnet diese Publikation in der Deutschen Nationalbibliografie.
The German National Library lists this publication in the German National Bibliography.

IMPRESSUM/IMPRINT

Herausgeber/Publisher: bel etage Kunsthandel GmbH, Wien/Vienna
Konzeption und Organisation/Conception and organisation: Wolfgang Bauer
Objektbeschreibungen, Experte/Object descriptions, expert: Wolfgang Bauer
in Zusammenarbeit mit/in cooperation with: Christiane Gastl, MA; Madeleine Jedlicka, BA; Mag. Agnes Prosch, Mag. Regine Vaget
Übersetzung/Translation: Mag. Regine Vaget
Lektorat/Proofreading: Mag. Sabine Hübler, Mag. Regine Vaget
Fotos/Photos: August Lechner
Grafische Gestaltung/Graphic design: August Lechner
Herstellung/Print: Druckerei Berger, Horn
Alle Rechte vorbehalten/All rights reserved
© bel etage, Wien/Vienna 2020
ISBN-978-3-902117-37-3
Titelseite/Front cover:
Rückseite/Back cover:

bel etage

WOLFGANG BAUER

45 JAHRE BEL ETAGE
21. HERBSTSALON 2020

EIN GRUND ZUM FEIERN!

45 YEARS BEL ETAGE
21ST AUTUMN SALON 2020

PLENTY OF REASON TO CELEBRATE!

VERKAUFS AUSSTELLUNG
IN BEIDEN GALERIEN
14. SEPTEMBER – 23. DEZEMBER 2020

EXHIBITION AND SALE OF WORKS OF ART
IN BOTH GALLERIES
14 SEPTEMBER – 23 DECEMBER 2020

bel etage

A-1010 Vienna, Mahlerstraße 15

dorotheergasse 12

A-1010 Vienna, Dorotheergasse 12

Bel Etage, Kunsthandel GmbH · phone: +43 1 512 23 79 · fax: ext. 99 · office@beletage.com · www.beletage.com



Wir befinden uns in einer Zeit des großen Wandels, vieles wird sich verändern müssen. Umso wichtiger ist es, sich zwischendurch dem Rhythmus zu entziehen und innezuhalten, sich auf Bleibendes zu besinnen, auf die eigene Befindlichkeit zu achten und den Geist treiben zu lassen. Und sich von Schönheit inspirieren zu lassen und darin Ruhe zu finden. Österreichisches Design beeinflusste einst ganz Europa, die Künstler der Wiener Secession hatten sich klar zu Erneuerung, Vielfalt und Offenheit bekannt, die jede politische Einflussnahme auf Inhalte und Ausdrucksformen ausschließt. Mit der Freiheit der Kunst sahen sie unabdingbar Internationalität, Diversität und Dialog verbunden, was wiederum einer offenen Gesellschaft bedurfte. In diesem Lichte und vor dem Hintergrund der aktuellen Weltsituation möge die Erinnerung an dieses Gedankengut erhalten bleiben und ihren Widerhall finden.

Anlässlich des 45jährigen Bestehens der bel etage freue ich mich ganz besonders, Ihnen diesen Jubiläumskatalog zu präsentieren. Sie alle, meine FreundInnen, KundInnen und Fördernde, haben diesen kontinuierlichen Erfolgsweg der bel etage erst möglich gemacht. Lassen Sie uns daher gemeinsam feiern und weiterhin Schönheit, Ausdruckskraft und bleibende Werte zelebrieren!

The world we live in is transforming, and life as we know it will have to change. In such challenging times it is even more important to take a break from the hustle and buzzle of everyday life and reflect on what remains, what really counts. To let our thoughts drift, be inspired by beauty and find peace within. Austrian design once influenced the whole of Europe. The artists of the Vienna Secession had clearly committed themselves to renewal, diversity and openness, ruling out any political influence on content and forms of expression. For them, freedom of the arts was intrinsically linked to internationality, diversity and dialogue - which in turn required an open society. In light of that and in view of the current state of the world, their principles are as important as ever. May their ideas and thoughts be cherished and upheld, remain in our memories and reverberate across the world.

Celebrating the 45th anniversary of bel etage, it is a particular pleasure for me to present this anniversary edition of our catalogue to you.

You, dear friends, clients and supporters have made the ongoing success of bel etage possible.

So let us celebrate together, continuing to appreciate beauty, the power of expression and lasting values.

Ihr/Yours

Wolfgang Bauer

Wolfgang Bauer



CLÉMENT MASSIER Vallauris 1844 – 1917 Paris **GOLFE JUAN**

1. FLOOR VASE

Designed by: Clément Massier

Executed by: Golfe Juan, around 1890

Marked: Clément Massier, Golfe Juan A. M, 2 (partly difficult to read)

Earthenware, bottom with round opening, glazed in red, blue and copper tones with metallic lustre, butterfly decoration on a speckled background, minimal restorations, good condition

H 62 cm

Provenance: private property, Austria

Ref.: U. Thieme/F. Becker (ed.), Allgemeines Lexikon der bildenden Künstler. Von der Antike bis zur Gegenwart, vol. 24, Leipzig, 1930, p. 221





RUDOLF QUITTNER Troppau (Austrian Silesia) 1872 – 1910 Neuilly-sur-Seine

2. CIRQUE MEDRANO, PARIS
63 Boulevard de Rochechouart/Rue des Martyrs

Signed on lower right: R. QUITTNER

Oil on canvas, cleaned, varnished, retouching and one small repair on the backside, newly framed, excellent condition

Dimensions: H 40.5 cm, W 54 cm
Frame dimensions: H 48 cm, W 62 cm

Provenance: private property, Austria

Ref.: U. Thieme/F. Becker (ed.), Allgemeines Lexikon der bildenden Künstler, Von der Antike bis zur Gegenwart, vol. 27, Leipzig, 1933, p. 530





ROBERT FIX 1877 – Vienna – 1945 · **PORTOIS & FIX** Wien III., Ungargasse 53; Paris 41, Bd. Haussmann

3. SHOWCASE FOR THE PARIS WORLD EXHIBITION IN 1900

Designed by: Robert Fix, Vienna,

Executed by: Porto & Fix, Vienna

Marked on the key: Porto & Fix, Wien, 2692; metal plaque visible on the front lower shelf: Porto & Fix, Wien, III. Ungargasse 53, Paris, 41, B. Haussmann

On the reverse: J. H. (blue oil crayon), rubber stamp: Porto & Fix Wien, 52647, 21274, Schl. N.

Solid birch and veneer, stained and polished, carved, surface lightly refreshed with slight retouching, original - also curved - glass, excellent original condition

H 170 cm, W 95 cm, D 50 cm; weight: only 30 kg

Provenance: private collection, Vienna





HEINRICH VOGELER Bremen 1872 – 1942 Qaraghandy, Kazakhstan **M. H. WILKENS & SÖHNE**

4. 399-PIECE SET OF SILVER CUTLERY IN A CANTEEN
from the cutlery series "Herbstzeitlose" (autumn crocus)

Designed by: Heinrich Vogeler, around 1900

Executed by: M. H. Wilkens & Söhne

Marked: T. H. SCHUMACHER (jeweller's mark), screw press (maker's mark for M. H. Wilkens & Söhne), German hallmark - crescent and crown, 800

Mahogany, solid and veneer, surface professionally repolished, brass fittings polished and stove-enamelled (two replaced), lining renewed, excellent condition

Silver, serving pieces partially gilt, gilding rubbed in places, old iron blades replaced by new stainless ones, slight signs of wear, all pieces monogrammed, very good condition

Canteen: H 37 cm, W 84.5 cm, T 50.5 cm

Knife 25 cm

44 large knives, 44 large forks, 19 large spoons, 23 dessert knives, 21 dessert forks, 22 dessert spoons, 24 fish knives, 24 fish forks, 23 oyster forks, 18 lobster forks, 22 tea spoons, 18 mocha spoons, 22 ice spoons, 19 fruit forks, 23 fruit knives, 33 serving pieces

Provenance: private property, Germany

Ref.: T. Bröhan, *Metallkunst. Vom Jugendstil zur Moderne (1889-1939)*, Berlin, 1990, p. 536, fig. 581





GUSTAV SIEGEL ATTR. 1880 – Vienna – 1968 **J. & J. KOHN**

5. A RARE ETAGERE

Designed by: Gustav Siegel attr., Vienna, around 1902

Executed by: J. & J. Kohn, model no. 956, Vienna, from 1902 onwards

Beech bentwood and plywood, cherry veneered, stained, surface professionally polished, very good condition

H 95.5 cm, W 73.5 cm, D 55.5 cm

Provenance: private property, Austria

Ref.: J. & J. Kohn sales catalogue, 1916, p. 70



KOLOMAN MOSER 1868 – Vienna – 1918 **J. & J. KOHN**

6. DESK

Designed by: Koloman Moser, Vienna, 1902

Executed by: J. & J. Kohn, model no. 3134, Vienna, from 1902 onwards

Beech bentwood and plywood, mahogany veneered, stained and polished,
surface professionally repolished, brass fittings, original cut and faceted mirror, leather covering renewed
H 104 cm, W 112.5 cm, D 56 cm

Provenance: private property, France



Ref.: documentation: International Exhibition of Modern Decorative Art, Turin, 1902; J. & J. Kohn Italian sales catalogue, 1906, p. 40; R. Leopold (ed.), Koloman Moser 1868–1918 (exhibition catalogue), Vienna, 2007, p. 121; G. Renzi, Il mobile moderno, Gebrüder Thonet Vienna, Jacob & Josef Kohn, Milan, 2008, p. 86



GEBRÜDER THONET

7. COAT AND HAT STAND

Designed and executed by: Gebrüder Thonet, Vienna, 1905, model no. 10414

Beech bentwood, dyed to mahogany, surface professionally repolished, 12 coat and hat hooks, metal tray renewed, excellent condition
H 206 cm, W 47/69 cm, D 47/69 cm

Provenance: private property, Austria

Ref.: G. Renzi, *Il mobile moderno*, Gebrüder Thonet Vienna, Jacob & Josef Kohn, Milan, 2008, p. 128



KOLOMAN MOSER ATTR. 1868 – Vienna – 1918 J. & J. KOHN

8. SHOWCASE

Designed by: Koloman Moser attr., Vienna, around 1901

Executed by: J. & J. Kohn, model no. 308/1

Beech bentwood and plywood, stained and polished, brass fittings, 2 brass balls, the furniture was professionally restored approx. 30 years ago, very good condition

H 220 cm, W 150 cm, D 50 cm

Provenance: private property, Austria

Ref.: J. & J. Kohn Italian sales catalogue, 1906, Mobili per sala da pranzo, no. 308/1





RICHARD LUDWIG

9. SHOWCASE

Designed and executed by: Richard Ludwig, Vienna, around 1902

Mahogany, solid and veneer, surface stained and professionally repolished, repairs on backside, cut and faceted glass with etched floral-geometric rose pattern, painted gold, brass fittings polished and stove-enamelled, excellent condition

H 183 cm, W 97 cm, D 39 cm

Provenance: private property, Germany

Ref.: E. B. Ottillinger, A. Loos, 1994, p. 39, fig. 26, p. 141





RICHARD LUDWIG

10. ART NOUVEAU LONG CASE CLOCK

Designed and executed by: Richard Ludwig, Vienna, 1904

Marked on metal plaque: RICHARD LUDWIG Möbelfabrik & Kunsttischlerei Wien VI Hofmuehlgasse 4

Solid walnut wood and veneer, surface slightly repolished, cut and faceted glass with etched geometric pattern, freshly re-gilt, partially hammered brass fittings, dial made of chased copper, 3 weights, 8-day-movement with Viennese 4/4-strike on 2 gong bars, repaired by a master clockmaker, excellent condition

First-class Viennese cabinet making

H 196 cm, W 50 cm, D 27 cm

Provenance: private property, Austria

Ref.: Das Interieur, Vienna 1904, vol. 5, plate 14



ADOLF LOOS Brno 1870 – 1933 Kalksburg near Vienna **U. P. WERKE**

11. FAN BACK CHAIR

Designed by: Adolf Loos

Executed by: U. P. Werke in Prague, Brno or Bratislava

Solid walnut, surface cleaned and slightly repolished, seat reupholstered with green leather, decorative studs renewed, very good original condition

H 74 cm, SH 39 cm, W 43 cm, D 50 cm0

Provenance: private collection, Czech Republic

Ref.: E. B. Ottillinger, A. Loos, Residenz Salzburg, Vienna 1994, p. 39, fig. 26, p. 141



FRIEDRICH OTTO SCHMIDT

12. OVAL TABLE À LA LOOS

Executed by: Friedrich Otto Schmidt, Vienna, around 1905

Solid beech, mahogany veneer, dyed to rosewood, surface professionally repolished, glass top, brass fittings and brass cuffs stove-enamelled, excellent condition

H 66 cm, W 75 cm, D 51 cm

Provenance: private property, Austria



PORTOIS & FIX

13. DESK

Designed by: Robert Fix, Vienna, around 1901

Executed by: Portoís & Fix, Vienna

Marked on locks: 8353 H

Rosewood, solid and veneered, inlay of Parnassus leaf ornament in maple and mahogany, drawers in solid elm wood, surface professionally repolished, brass fittings, leather on top renewed, excellent restored condition

H 78 cm, W 154 cm, D 80 cm

Provenance: private property, Austria

Ref.: M. Wenzl-Bachmayer, Die Firma Portoís & Fix, Pariser Esprit und Wiener Moderne, Vienna, 2008, p. 22



ROBERT FIX / PORTOIS & FIX

14. SIDEBOARD

Designed by: Robert Fix, Vienna, around 1901

Executed by: Portoís & Fix, Vienna

Marked on locks: PORTOIS & FIX

Rosewood, solid and veneered, inlay of Parnassus leaf ornament in maple and mahogany, inside made of elm wood, surface professionally repolished, brass fittings, brass band on the base, cut and faceted original glass panels, pull-out shelf in the middle, two locks repaired, high-quality Viennese cabinet making, excellent condition

H 180 cm, B 210 cm (58/94/58), T 43/47 cm

Provenance: private property, Austria

Ref.: M. Wenzl-Bachmayer, Die Firma Portoís & Fix, Pariser Esprit und Wiener Moderne, Vienna, 2008, p. 22





CARL MOSER JUN. 1873 - Bolzano - 1939

15. PARONA DI VALPOLICELLA

Signed and dated on lower left: C. MOSER (19)29

Colour woodcut on Japan paper, repaired and retouched, newly framed, nice condition

Dimensions: H 26.5 cm, W 55.5 cm
Frame dimensions: H 45 cm, W 69 cm

Provenance: private property, Austria

Ref.: U. Thieme/F. Becker (ed.), Allgemeines Lexikon der bildenden Künstler, Von der Antike bis zur Gegenwart, vol. 25, Leipzig 1931, p. 181



KARL O'LYNCH OF TOWN Graz 1869 - 1942 Genoa

16. EVENING AT THE HARBOUR OF CAMOALI

Signed on lower right: O'Lynch

Oil on canvas, cleaned, newly varnished and framed, excellent condition

Dimensions: H 50.5 cm, W 63.5 cm
Frame dimensions: H 60 cm, W 73 cm

Provenance: private property, Germany

Ref.: U. Thieme/F. Becker (ed.). Allgemeines Lexikon der bildenden Künstler, Von der Antike bis zur Gegenwart, vol. 26, Leipzig, 1932, p. 15; exhibition catalogue Österr. Galerie 1993, Hagenbund-Die verlorene Moderne, p. 258



JOSEF MARIA AUCHENTALLER
Vienna 1865 - 1949 Grado
GEORG ADAM SCHEID

17.1. CANDLESTICK

Designed by: Josef Maria Auchentaller
Executed by: Georg Adam Scheid, around 1903
Silver mount marked: G.A.S. for Georg Adam Scheid, 900, Austrian hallmark - head of Diana (A for Vienna, 2 for 900/1000), GES.GESCHÜTZT, D.R. Deposé

Silver, small dent, mahogany, surface professionally repolished, very good condition
First-class Viennese silversmith craftsmanship

H 12.5 cm

Provenance: private property, Germany

Ref.: comp.: R. Festi, Wiener Bijoux. Schmuck und Design. Josef Maria Auchentaller für Georg Adam Scheid 1895-1910, Grado 2015, p. 115, fig. 52



GEORG ADAM SCHEID
Schönau 1837 - 1921 Merano

17.2. CANDLESTICK

Designed and executed by: Georg Adam Scheid, Vienna, around 1910
Marked: G.A.S. for Georg Adam Scheid, Austrian hallmark - head of Diana (A for Vienna, 2 for 900/1000)

Silver, enamel on guilloché ground, excellent original condition

First-class Viennese silversmith craftsmanship

H 10.5 cm, Ø 7 cm

Provenance: private property, Austria





JOSEF MARIA AUCHENTALLER
Vienna 1865 - 1949 Grado
GEORG ADAM SCHEID

18.1. PEACOCK VASE

Designed by (silver mount): Josef Maria Auentaller, 1898-1900

Executed by: Georg Adam Scheid

Silver mount marked: G.A.S. for Georg Adam Scheid, Austrian hallmark - head of Diana (A for Vienna, 2 for 900/1000)

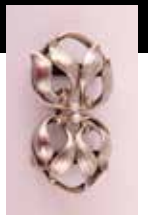
Colourless glass, figural silver mount, enamel, with small chips, excellent condition

First-class Viennese silversmith craftsmanship

H 13.5 cm

Provenance: private property, France

Ref.: R. Festi, Wiener Bijoux. Schmuck und Design. Josef Maria Auentaller für Georg Adam Scheid 1895-1910, Grado 2015, p. 114



JOSEF MARIA AUCHENTALLER
Vienna 1865 - 1949 Grado
GEORG ADAM SCHEID

18.2. CLASP FOR A BRACELET

Designed by: Josef Maria Auentaller, 1898-1900

Executed by: Georg Adam Scheid, Vienna

Silver mount marked: G.A.S. for Georg Adam Scheid, 800, Austrian hallmark - head of Diana (A for Vienna, 2 for 900/1000)

Gold-plated silver, enamelled green, pearls, excellent original condition

4 x 2 cm

Provenance: private property, Austria

Ref.: R. Festi, Wiener Jugendstil Auentaller, exhibition catalogue, Stadtmuseum Bruneck, Bruneck, 2015, p. 91, fig. 77



KOLOMAN MOSER ATTR. 1868 – Vienna – 1918 **MEYR'S NEFFE, ADOLF**

19. LARGE ASHTRAY

Designed by: Koloman Moser attr.

Executed by: Meyr's Neffe, Adolfov near Vimperk, around 1900

Transparent soft yellow crystal glass, casted and cut, small scratches, very good condition

H 10 cm, Ø 24 cm

Provenance: private property, Germany



MARIE KIRSCHNER Prague 1852 – 1931 Košátky **LÖTZ WITWE KLOSTERMÜHLE**

20. LARGE GLASS BOWL

Designed by: Marie Kirschner, 1905

Executed by: Lötzwitwe Klostermühle

Décor: pensée verlaufend

Shape: 1905, com. 1090/176

Marked: MK engraved

Clear glass, optically blown, soft purple iridescent, excellent original condition

H 12.5 cm, Ø 25.5 cm

Provenance: private property, Germany



1090/176

Ref.: H. Ricke (ed.), Lötz, Böhmisches Glas 1880–1940, vol. 2, Munich, 1989, p. 351 (paper pattern)



LÖTZ WITWE

21. A PAIR OF VASES

Designed and executed by: Lötz Witwe, Klostermühle, around 1905
Décor: Maximia

Colourless glass, exterior decoration: Candia ground with silvery yellow granules and irregular rows of horizontal blue stripes, excellent condition

H 22 cm, Ø approx 8 cm

Provenance: private collection, Austria

Ref.: <https://loetz.com/decors-a-z/maximia> (accessed June 30, 2020) (décor): H. Ricke (ed.), Lötz, Böhmisches Glas 1880–1940, vol. 2, Munich, 1989, p. 166



ANTOINETTE KRASNIK / SCHOOL OF PROF. KOLOMAN MOSER Lovinac 1874 – 1956 Zagreb **LÖTZ WITWE**

22. A PAIR OF VASES

Designed by: School of Prof. Koloman Moser, Vienna, around 1900

Executed by: Lötzwitwe, Klostermühle, for E. Bakalowits Söhne

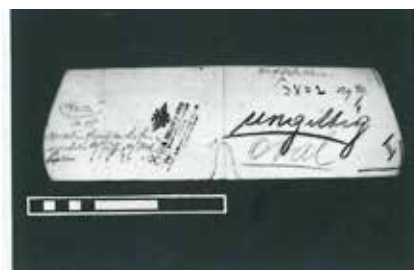
Décor: Cobalt Luna optisch

Transparent glass, pale green ground, with blue underlay spreading from top, softly iridescent, excellent condition

H 6.5 cm, W 15 cm, D 10 cm

Provenance: private property, Austria

Ref.: H. Ricke (ed.), Lötz, Böhmisches Glas 1880–1940, vol. 2, Munich, 1989, p. 281 (paper pattern)



85/3802 (A. Krasnik)



LÖTZ WITWE KLOSTERMÜHLE

23. VASE

Executed by: Lötze Witwe around 1900

Décor: Argus Phaenomen

Signed: Loetz Austria

Body with three pinched sides, colourless glass, inside green overlay, turquoise-silver wavy bands and irregular dots, violet iridescent, excellent condition

H 14 cm, Æ 11 cm

Provenance: private property, Austria

Ref.: comp. Ricke – Ploil. Vol. 1, p.157, no. 151, p. 183, no. 194 (décor)



LÖTZ WITWE / E. BAKALOWITS SÖHNE

24. VASE WITH BRASS MOUNT

Executed by: Lötzwitwe, Klostermühle, for E. Bakalowits Söhne, Vienna, 1901

Décor: Phaenomen Gre 358

Mount: August Lux

Shape: 1901, prod. no. Com. 85/3865



Colourless glass with opal underlay, base with band in dark brown-red, metallic-yellow side, salmon-red mouth, the whole covered with trailed silver-yellow bands; lip with gilt brass mount round the edge (one leaf missing), gilt brass base, excellent condition

H 13 cm (with mount), Ø 7 cm

A particularly lavish Phaenomen décor was used on this vase. It was first used by Franz Hofstötter to decorate his seminal vase designs for the Paris World Exhibition in 1900.

Provenance: private property, Austria

Ref.: H. Ricke (ed.), Lötz, Böhmisches Glas 1880–1940, Munich, 1989, vol. 2, p. 286 (paper pattern)



JUTTA SIKA Linz 1877 – 1964 Vienna **E. BAKALOWITS SÖHNE**

25. THREE LIDDED JARS

Designed by: Jutta Sika, around 1900

Executed by: Mounting: Argentor-Werke, Glass: Meyr's Neffe for E. Bakalowits Söhne, model no. 4978, 4979

Marked: ARGENTOR, A S

Clear glass, optically blown, silver plated brass mounting, jug: glass optically blown, partially worn silver plating, very good original condition

Lidded jars: H 21 cm, W 24 cm, Ø 12 cm
Butter dish: H 10 cm, W 19.5 cm, Ø 11.5 cm

Provenance: private property Austria

Ref.: W. Neuwirth, Argentor-Werke, Rust & Hetzel, Nachdruck des Musterbuches no. 13, Vienna, 2006, p. 50, 96



JUTTA SIKA/KOLOMAN MOSER Linz 1877 – 1964 Vienna/1868 – Vienna – 1918 **ARGENTOR-WERKE/E. BAKALOWITS SÖHNE**

26. WINE COOLER

Designed by: Jutta Sika (shape), Koloman Moser (glass), around 1900

Executed by: Argentor-Werke (mounting), Meyr's Neffe for E. Bakalowits Söhne (glass)

Décor: Kristall Meteor 100

Marked: 15 EP B.E.P.W, 2230

Clear glass, optically blown, silver plated brass mounting, very good original condition

H 21 cm, W 30.5 cm, Ø 16.5 cm

Provenance: private property, England

Ref.: Hand-drawings archive at the Museum of Applied Arts, Vienna, design drawing inv. no. K1 13758-98; C. Thun-Hohenstein, C. Witt-Döring, E. Schmuttermeier (ed.) Koloman Moser, Universalkünstler, exhibition catalogue, MAK Vienna, Vienna 2018, p. 48, 50; W. Neuwirth, Argentor-Werke, Rust & Hetzel, Nachdruck des Musterbuches no. 13, Vienna, 2006, p. 82



GUSTAV SIEGEL 1880 – Vienna – 1968 **J. & J. KOHN**

27. THREE-LEGGED SIDE TABLE

Designed by: Gustav Siegel, Vienna, after 1900

Executed by: J. & J. Kohn, model no. 326 1/2/T

Beech bentwood, dyed to rosewood, surface professionally repolished, cast brass fittings, fabric on top renewed, excellent condition

H 70 cm, Æ 54.5 cm

Provenance: private property, Austria

Ref.: Italian sales catalogue of J. & J. Kohn, 1906, p. 72; G. Renzi, *Il mobile moderno*, Gebrüder Thonet Vienna, Jacob & Josef Kohn, Milan, 2008, p. 34





28. EXTRAORDINARY CORNER SHOWCASE

Designed and executed: Austro-Hungarian Monarchy, around 1905

Solid oak, 105 panes of faceted and cut glass mounted in brass, glass shelves, with nickel-plated brass holders, brass fittings, small wooden parts repaired, surface slightly repolished, very good condition

First-class cabinet making

H 141 cm, W 138 cm, D 68 cm, side length approx. 100 cm

Provenance: private property, Austria



OLGA WISINGER-FLORIAN

1844 – Vienna – 1926

29. CALVARY, BISAMBERG

Signed on lower right: Olga Wisinger Florian

Oil on wood, cleaned and varnished, framed, some repairs on frame, excellent condition

Dimensions: H 36cm, W 47 cm

Frame dimensions: H 54 cm, W 65 cm

Provenance: private collection, Austria

Ref.: H. Fuchs, Die österreichischen Maler des 19. Jahrhunderts, vol. 4, Vienna, 1973, vol. K 136



ADOLF LOOS Brno 1870 – 1933 Kalksburg near Vienna **FRIEDRICH OTTO SCHMIDT**

30. 'KNIESCHWIMMER' ARMCHAIR

Designed by: Adolf Loos, Vienna, around 1901

Executed by: F. O. Schmidt, around 1930

Beech bentwood, surface cleaned and slightly repolished, leather renewed approx. 20 years ago, very good condition

H 84 cm, W 108 cm, D 76 cm

Provenance: private property, Germany

Ref.: comp. E. B. Otillinger, Adolf Loos, Wohnkonzepte und Möbelentwürfe, Vienna, 1994, p. 56, 119, 139



LÖTZ WITWE

31. VASE

Executed by: Lötze Witwe, Klostermühle, around 1900

Décor: Phaenomen Gre 299, Tricolor

Signed: Loetz Austria

Transparent glass, Candia ground, scattered blue, green and pink oil spots, excellent condition

H 25 cm

Provenance: private property, Switzerland

Ref.: <https://loetz.com/decors-a-z/phaenomen-genres/phaenomen-genres/pg-299> (accessed January 11, 2019); comp.: H. Ricke (ed.), Lötze, Böhmisches Glas 1880–1940, col. 1, Munich, 1989, p. 104, fig. 68 (décor)



LÖTZ WITWE

32. VASE FOR THE PARIS WORLD EXHIBITION IN PARIS IN 1900

Executed by: Lötze Witwe, Klostermühle, around 1900

Décor: Phaenomen Gre 384

Shape: 1900, prod. no. 384

Signed: Loetz Austria (engraved on base)

Colourless glass, irregular green-blue splashes and threads, multi-colour iridescent, excellent condition

H 35 cm

This décor was developed by artists of the Lötze glassworks in order to successfully compete with the Tiffany Studios at the Paris World Exhibition in 1900.

Provenance: private collection, Belgium

Ref.: H. Ricke (ed.), Lötze, Böhmisches Glas 1880–1940, vol. 2, Munich, 1989, p. 92





LÖTZ WITWE

33. VASE

Executed by: Lötze Witwe, Klostermühle
Décor: Titania, Gre 2512, around 1905
Shape: PN II - 2513

Vase with Titania décor in green and platinum on transparent ground, excellent condition

H 15.5 cm
Provenance: private property, USA

Ref.: <https://loetz.com/decors-a-z/titania/titania/titania-gre-2512> (accessed June 26, 2020)



LÖTZ WITWE

34. VASE

Executed by: Lötzwitwe, Klostermühle, 1898

Décor: Phaenomen Genre 166, 1898

Shape: 1900, prod. no. I-7465

Signed: Loetz Austria

Salmon pink glass, silver threads pulled upward, multi-colour iridescent, excellent condition

H 25 cm

Provenance: private property, Germany



Ref.: <https://loetz.com/decors-a-z/phaenomen-genres/phaenomen-genres/pg-166> (accessed June 16, 2020); H. Ricke (ed.), Lötzw, Böhmisches Glas 1880–1940, vol. 2, Munich, 1989, p. 24



35. FOUR CEILING LAMPS

Designed and executed: Vienna, around 1900

Brass polished and stove-enamelled, newly electrified, very good condition

H 28.5 cm, W 25 cm, D 12 cm

Provenance: private property, Austria



K. & K. HOF-SILBER- UND CHINASILBERWARENFABRIK MORITZ HACKER

36. MANTEL CLOCK WITH BLUE GLASS COLUMNS

Executed by: k. & k. Hof-Silber- und Chinasilberwarenfabrik Moritz Hacker, Vienna around 1910
Unmarked

Silver-plated tin, partially worn silver plating, four columns made of dark blue glass, 8-day movement, movement overhauled by an expert clock-maker, nice original condition

H 35.5 cm, W 30 cm, D 17 cm

Provenance: private property, Austria

Ref.: W. Neuwirth, Blühender Jugendstil, vol. II, Vienna 1991, pp. 251–254



GUSTAV GURSCHNER Mühldorf/Bavaria 1873 – 1971 Vienna

37. A PAIR OF BOOKENDS

Designed by: Gustav Gurschner, around 1900

Marked: GURSCHNER

Bronze, ornamental relief, very nice original patina, slightly rubbed, very good condition

H 29 cm, W 13.5 cm, D 12.5 cm

Provenance: private property, United Kingdom

Ref.: Vollmer, vol. II, p. 339; exhibition catalogue Österreichische Galerie Belvedere, 1993, "Hagenbund – Die verlorene Moderne", pp. 117, 247



GUSTAV GURSCHNER Mühldorf/Bavaria 1873 – 1971 Vienna

38. VASE

Designed by: Gustav Gurschner, Vienna, around 1900

Marked: GURSCHNER, AUSTRIA

Bronze, original patina, rubbed in some places, ornamental relief, good original condition

H 9.5 cm, W 16.5 cm, Ø 7.5 cm

Provenance: private property, Austria

Ref.: H. Vollmer, vol. II, Leipzig, 1955, p. 339



GUSTAV GURSCHNER

Mühldorf (Bavaria) 1873 – 1971 Vienna

K. K. KUNSTERZGIESSEREI

39.1. CANDLESTICK

Designed by: Gustav Gurschner, Vienna, around 1900

Executed by: K.K. Kunsterzgießerei Wien

Marked: GURSCHNER, k.k.KE. Wien, 767 a.

Bronze, original patina, nice condition

H 20 cm

Provenance: private property, Germany



GUSTAV GURSCHNER

39.2. ROCKER BLOTTER

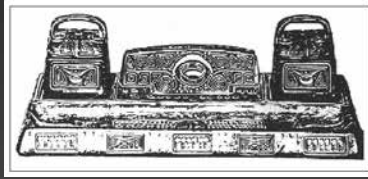
Designed by: Gustav Gurschner, around 1905

Marked: 5070

Bronze, ornamental relief, original patina, very nice original condition

H 8 cm, W 17 cm, D 18 cm

Provenance: private property, Austria



GUSTAV GURSCHNER Mühldorf/Bavaria 1873 – 1971 Vienna **K.K. KUNSTERZGIESSEREI WIEN**

40. WRITING SET

Designed by: Gustav Gurschner, around 1900

Executed by: K.K. Kunsterzgießerei Wien, model no. 1413

Marked: GURSCHNER, K.K. Kunsterzgießerei Wien

Bronze, ornamental relief, nice original patina, slightly rubbed, one glass liner damaged, very good condition

H 10 cm, W 35.5 cm, D 15.5 cm

Provenance: private property, United Kingdom

Ref.: Catalogue raisonné Gustav Gurschner, GG-1900004., model no. 1413, around 1900



ARCHIBALD KNOX Cronkbourne 1864 – 1933 Braddan **LIBERTY & CO.**

41. TABLE CLOCK

Designed by: Archibald Knox, 1902

Executed by: Liberty & Co., London, 1902–05, model no. 0608

Marked: 0608, R^o468015

Silver-plated pewter, silver plate renewed, glass cabochons, enamelled dial, 1-day movement, movement masterfully overhauled by a clockmaker, some scratches, very good condition

H 14 cm, W 7.6 cm, D 5.7 cm

Provenance: private property, Canada

Ref.: Stephen A. Martin, Archibald Knox, London, Artmedia Press, 2001, fig. p. 233



ARCHIBALD KNOX Cronkbourne 1864 – 1933 Braddan **LIBERTY & CO.**

42. A PAIR OF "TUDRIC" PEWTER CANDELABRA

Designed by: Archibald Knox

Executed by: Liberty & Co., London, 1905

Marked: 6/ 0530 with registration marks for 1905

Tin, cast and silver-plated, 3 nozzles have been soldered where they meet the arms, removable nozzles with scratches and slight bumps, good condition

H 28 cm

Provenance: private property, United Kingdom



LEOPOLD BAUER Jägerndorf 1872 – 1938 Vienna **LÖTZ WITWE/E. BAKALOWITS SÖHNE**

43. FOUR-FLAME CHANDELIER

Designed by: Leopold Bauer, Vienna, around 1903

Executed by: E. Bakalowits Söhne, Vienna, around 1903; original lampshades by Lötz Witwe, Klostermühle

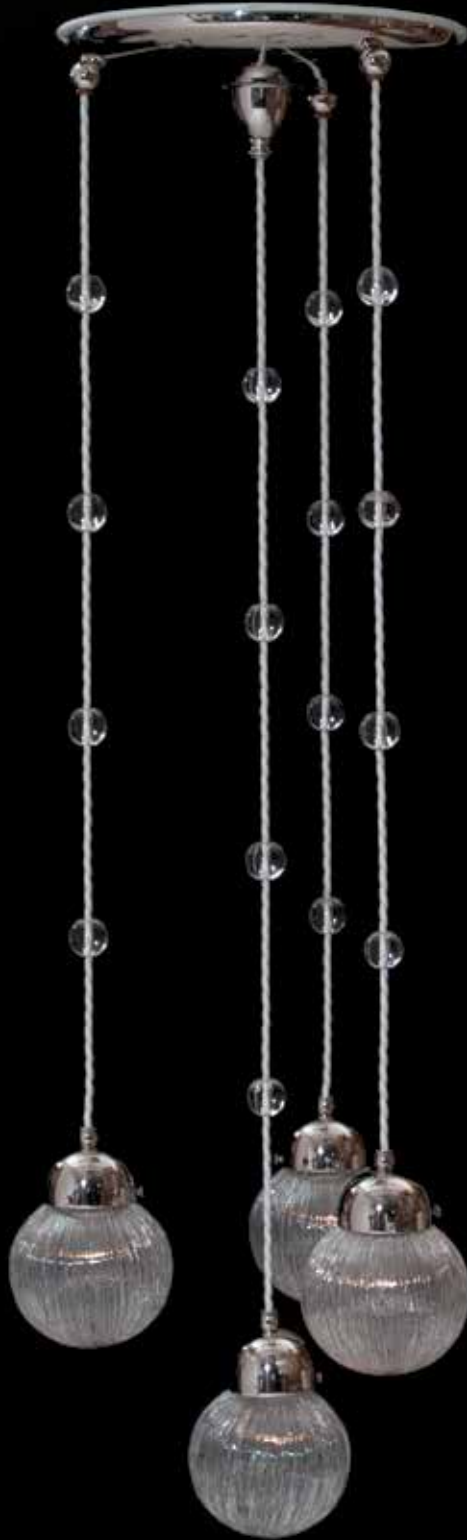
Décor: Kristall Texas (flash glass)

Brass, polished and stove-enamelled, 4 glass lampshades with blue dots, 12 solid transparent glass beads, wiring renewed, easily adjustable to room height, excellent condition

H 150 cm, Ø 50 cm, Ø 38 cm (ceiling plate)

Provenance: private property, Austria

Ref.: Das Interieur, Vienna, 1904, p. 32



LEOPOLD BAUER Jägerndorf 1872 – 1938 Vienna **LÖTZ WITWE/E. BAKALOWITS SÖHNE**

43. FOUR-FLAME CHANDELIER

Designed by: Leopold Bauer, Vienna, around 1903

Executed by: E. Bakalowits Söhne, Vienna, around 1903; original lampshades by Lötz Witwe, Klostermühle

Décor: Kristall Texas (flash glass)

Brass, polished and stove-enamelled, 4 glass lampshades with blue dots, 12 solid transparent glass beads, wiring renewed, easily adjustable to

Provenance: private property, Austria

Ref.: Das Interieur, Vienna, 1904, p. 32



KOLOMAN MOSER ATTR. 1868 – Vienna – 1918 E. BAKALOWITS SÖHNE/LÖTZ WITWE

45. SMALL CEILING LAMP

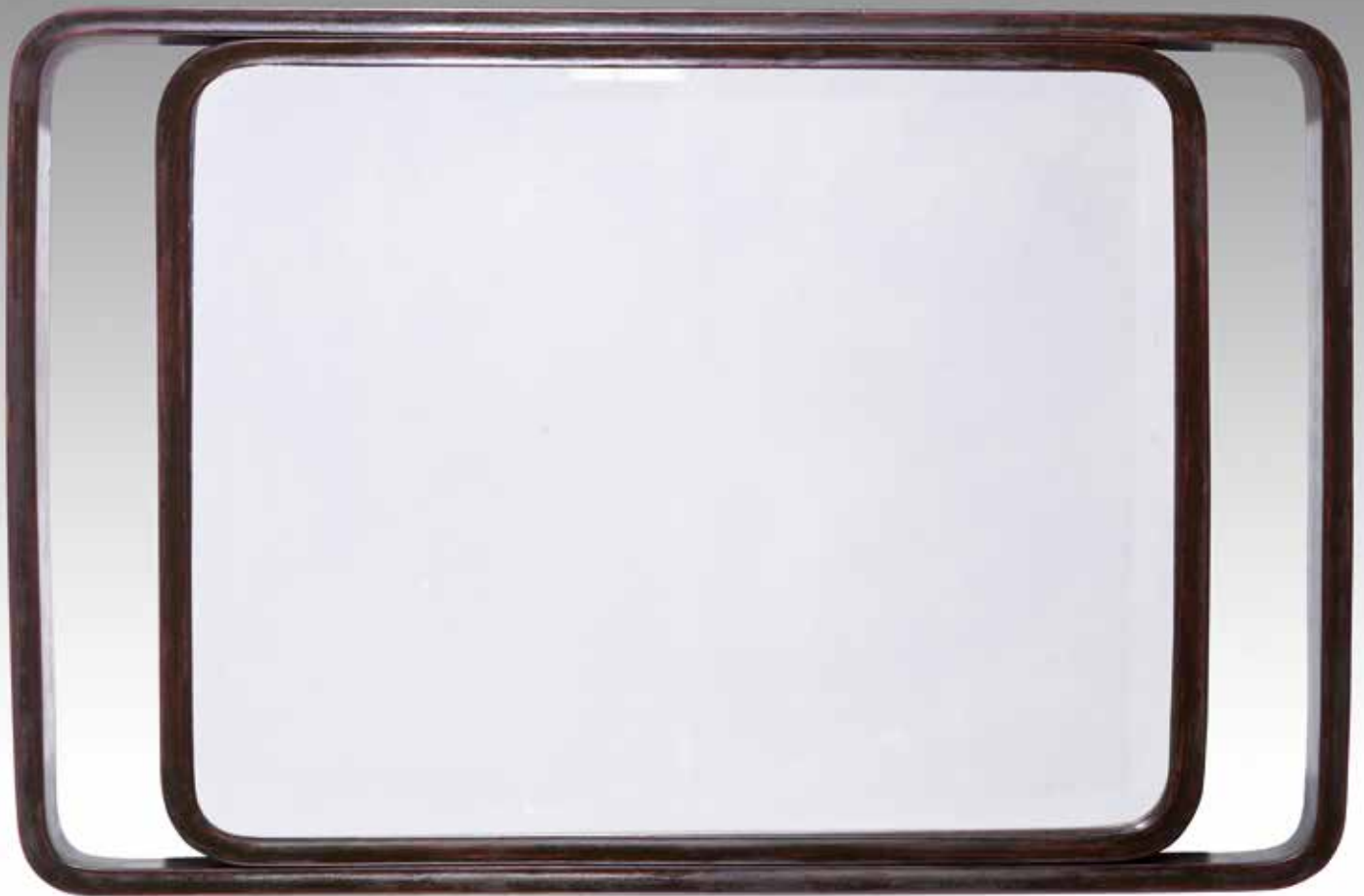
Designed: Koloman Moser attr., Vienna, around 1900

Executed by: E. Bakalowits Söhne, Vienna; Lötzwitwe, Klostermühle

Brass with original dark patina, wooden ceiling plate, original opalescent glass shade by Lötzwitwe, embedded heart motif, excellent original condition

H 20 cm, Ø 24 cm

Provenance: private property, Austria



JOSEF HOFFMANN ATTR. Brtnice 1870 – 1956 Vienna **J. & J. KOHN**

46. MIRROR

Designed by: Josef Hoffmann attr., Vienna, 1904

Executed by: J. & J. Kohn, model no. 40/8

Beech bentwood, stained and polished, slightly restored, original cut mirror, good original condition

H 56 cm, W 87 cm, D 4 cm

Provenance: private property, Austria

Ref.: J. & J. Kohn sales catalogue, 1904, p. 41; D. E. Ostergard (ed.), Bent Wood and Metal Furniture 1850–1946, New York, 1987, fig. p. 252; G. Renzi, Il mobile moderno, Gebrüder Thonet Vienna, Jacob & Josef Kohn, Milan, 2008, p. 24



JOSEF HOFFMANN Brno 1870 – 1956 Vienna **J. & J. KOHN**

47. TWO ARMCHAIRS AND A "FLEDERMAUS" TABLE

Designed by: Josef Hoffmann, Vienna, around 1906

Executed by: J. & J. Kohn, model no. 729/F, no. 728/T

Marked: paper label on table

Beech bentwood, dyed to cherry, surface professionally repolished 10 years ago, upholstery renewed with fabric from Backhausen Wien based on an original design by Josef Hoffmann, very good condition

Armchair: H 73.5 cm, SH 44 cm, W 56 cm, D 52 cm; **Table:** H 73.5 cm, Ø 60 cm

Provenance: private property, Austria

Shown at: Pinacothèque de Paris, Paris, 2015.



JOSEF HOFFMANN Birnize 1870 – 1956 Vienna **J. & J. KOHN**

48. SEATING GROUP
consisting of: 1 bench, 2 chairs

Designed by: Josef Hoffmann attr., Vienna, around 1910

Executed by: J. & J. Kohn, model no. 729/1C, no. 729/1

Beech bentwood, dyed to cherry, surface professionally repolished 10 years ago, upholstery renewed with fabric from Backhausen Vienna based on an original design by Josef Hoffmann, very good condition

Bench: H 90 cm, SH 47 cm, W 117 cm, D 60 cm; **Chair:** H 90 cm, SH 47 cm, W 41.5 cm, D 47 cm

Provenance: private property, Austria

Ref.: J. & J. Kohn sales catalogue, 1916, p. 25



JOSEF HOFFMANN Brtnice 1870 – 1956 Vienna **WIENER WERKSTÄTTE**

49.1. CIGARETTE DISPENSER / 49.2. SMOKING COMPENDIUM

Designed by: Josef Hoffmann, before 1911

Executed by: Wiener Werkstätte, Vienna around 1908, model no. S 1102/S 2327

Marked: JH, rose mark, WW, Austrian hallmark - head of Diana (A for Vienna, 2 for 900/1000), monogram JF in a circle (most probably metal worker Johann Fessner, active at WW from 1909)/WW, Austrian hallmark - head of Diana (A for Vienna, 2 for 900/1000)

Silver ivy-leaf pattern, slightly warped, original glass liner, notched, polished, small chips, very good condition

Cigarette dispenser: H 10 cm, W 9.5 cm, D 7.5 cm

Smoking compendium: H 7.5 cm, W 13 cm, D 9 cm

Provenance: Günther Stephan Asenbaum; since 1986, private property, USA



Ref.: A contemporary photograph is preserved in the Wiener Werkstätte archive at the Austrian Museum of Applied Arts (MAK), Vienna, inv. no. WWF 113-53-7; Deutsche Kunst und Dekoration, XXIII, 1909, p. 178; W. Neuwirth, Wiener Werkstätte Schutzmarken, vol. 1, Vienna, 1985, p. 228/cf. a contemporary photograph is preserved in the Wiener Werkstätte photographic archive at the Austrian Museum of Applied Arts (MAK), Vienna, inv. no. KI 12032-11; model. no. S 2316, designed by Eduard Josef Wimmer-Wissgrill, before 1911



JOSEF HOFFMANN Brtnice 1870 – 1956 Vienna **WIENER WERKSTÄTTE**

50. OVAL JARDINIÈRE

Designed by: Josef Hoffmann, Vienna, May 1914

Executed by: Wiener Werkstätte, model no. S 3294

Marked on the base: WIENER WERKSTÄTTE, JH, WW, rose mark, Austrian hallmark - head of Diana (A for Vienna, 2 for 900/1000)

Silver, chased, hand polished, original liner made of nickel-plated brass, slight dents, very nice original condition

H 11 cm, L 25 cm, W 18 cm

This jardiniere was probably intended for the Werkbund exhibition in Cologne in 1914 as part of an ensemble.

Provenance: private property, Belgium

Ref.: Wiener Werkstätte archive at the Austrian Museum of Applied Arts, Vienna, design drawing inv. no. KI 11998-20





JOSEF HOFFMANN ATTR. Britnize 1870 – 1956 Vienna **J. & J. KOHN**

51. ETAGERE

Designed by: Josef Hoffmann attr., Vienna, around 1905

Executed by: J. & J. Kohn, model no. 1068

Beech and beech bentwood, dyed black and limed, surface cleaned and slightly repolished, very good original condition

H 128 cm, W 78 cm, D 30 cm

Provenance: private property, Austria

Ref.: J. & J. Kohn sales catalogue, 1916, p. 115; G. Renzi, *Il mobile moderno*, Gebrüder Thonet Vienna, Jacob & Josef Kohn, Milano 2008, p. 182



J. & J. HERRMANN

52. WRITING DESK

Executed by: J. & J. Herrmann, Vienna, 1905

Marked on the lock: 2011

Solid ash or oak and veneer, ebonized and professionally repolished, newly nickel-plated original brass fittings and brass covered bases, interior elements in solid oak, four concealed drawers on the left, four drawers on the right, desk top newly covered with fabric, excellent condition
H 79 cm, W 148.5 cm, D 81 cm

According to the original invoice, the desk was purchased on 1 December 1905 from J. & J. Herrmann.

Provenance: private property, Austria



FRITZ DIETL b. Vienna 1880
WENZEL HABLIK Most, Bohemia 1881 – 1937 Itzehoe, Germany
RUDOLF HANCKE b. Vienna 1887
E. HRADEZKY; RICHARD MÜLLER; JOSEF STREJC

53. JULFEIER 1904
 14-page booklet

Signed top left on the inside of the cover: J. Strejc

Vienna, 1904

24 x 25.5 cm

Cover: stencil print on ingrain wallpaper

1. F. Dietsl, "Julfeier 1904"; 2. R. Müller, "Pattern"; 3. F. Dietsl, "Two Puppeteers"; 4. F. Dietsl, "Love"; 5. J. Strejc, "Nymph and Faun"; 6. W. Hablik, "Three Portraits"; 7. R. Hancke, "Bathing Children"; 8. F. Dietsl, "Heaven's Gate"; 9. J. Strejc, "Swans"; 10. F. Dietsl, "Joyful Welcome"; 11. W. Hablik, "Village on the lake"; 12. R. Müller/E. Hradetzky, "Country House"; 13. W. Hablik, "The Fortune Teller"; 14. F. Dietsl, "The Artist's Christmas Eve";

The artists Fritz Dietsl, Richard Müller, Wenzel Hablik, Josef Strejc, E. Hradetzky and Rudolf Hancke created this booklet in collaboration. It was most likely intended for and used exclusively by themselves or maybe also by their closest friends. Our copy used to belong to Josef Strejc. Despite intensive research, no other copy is known to us.

Provenance: estate of Josef Strejc

Shown at: Schirn Kunsthalle Frankfurt, 2016 / Albertina, Vienna, 2017, Kunst für alle. Der Farbholzschnitt in Wien um 1900

Ref.: T. G. Natter/M. Hollein/K. A. Schröder (ed.), Schirn Kunsthalle Frankfurt / Albertina, Vienna, exhibition catalogue., Kunst für alle. Der Farbholzschnitt in Wien um 1900, Cologne 2016, p. 80 f



W. HASELIK



J. STROEC



H. BELLER

S. GRAFITSKY



S. HANKE



F. DIEHL



W. HASELIK



KRISTE BURICK, WIV SWALCHON KRISTE BODALLA. — F. DIEHL



W. HASELIK



F. DIEHL



CARL MOLL 1861 – Vienna – 1945

54. OBERES BELVEDERE

Catalogue raisonné no. DG 15, 1903, colour woodcut on Japan paper, plate dimensions: 47 x 47,2 cm, original sheet dimensions: 63 x 52,5 cm, trimmed to 47,5 x 47,5 cm

Dimensions: H 47,5 cm, W 47,5 cm
Frame dimensions: H 51 cm, W 51 cm

Provenance: private property, Austria

Ref.: H. Fuchs, *Die österreichischen Maler des 19. Jahrhunderts*, vol. 3, Vienna, 1973, K 53; M. Pabst, *Wiener Graphik um 1900*, Munich 1984, p. 118, fig. 119



JOSEF ENGELHART 1864 – Vienna – 1941

55. ICE SKATER

Signed and dated on lower right: Engelhart

Watercolour on paper, newly framed, excellent condition

Dimensions: H 40.5 cm, W 18 cm

Frame dimensions: H 53 cm, W 30 cm

Provenance: private property, Germany

Ref.: U. Thieme/F. Becker (ed.), Allgemeines Lexikon der bildenden Künstler, Von der Antike bis zur Gegenwart, vol. 10, Leipzig, 1914, p. 540



JOSEF HOFFMANN Brtnice 1870 – 1956 Vienna **J. & J. KOHN**

56. FOUR "FLEDERMAUS" CHAIRS WITH TABLE

Designed by: Josef Hoffmann, Vienna, around 1906

Executed by: J. & J. Kohn, model no. 729/S, no. 728/T

Marked: brand mark on table and chairs: "J. & J. Kohn Teschen Austria" and paper label: Jacob & Josef Kohn

Solid beech, beech bentwood and plywood, dyed to rosewood, surface slightly repolished, upholstery and fabric renewed, very good condition

Chairs: H 74 cm, SH 45 cm, W 55 cm, D 46 cm

Table: H 75 cm, Ø 66 cm

Provenance: private property, Austria

Ref.: J. & J. Kohn sales catalogue, 1916, pp. 37, 38; M. J. Gradl (ed.), Moderne Bauformen, Monatshefte der Architektur, VII, Stuttgart, 1908, p. 374



JACOB & JOSEF KOHN

57. WARDROBE

Designed and executed by: J. & J. Kohn, Vienna, around 1906

Beech bentwood and plywood, stained and polished, geometric inlays, brass fittings, base faced in brass, restored approx. 25 years ago, very good condition

H 200 cm, W 121 cm, D 54 cm

Provenance: private collection, Vienna

Ref.: J. & J. Kohn Italian sales catalogue, 1907, cover





JOSEF HOFFMANN Brtnice 1870 – 1956 Vienna **J. & J. KOHN**

58.2. SUITE
known as "Buenos Aires Suite"

Consisting of: 1 settee, 2 armchairs

Designed by: Josef Hoffmann, around 1907
Executed by: J. & J. Kohn, model no. 675/C, F





Beech bentwood and plywood, dyed to rosewood, surface professionally repolished, decorative brass nails polished and stove-enamelled, upholstery and leather renewed, excellent condition

Settee: H 75 cm, SH 42 cm, W 136 cm, D 71 cm

Armchairs: H 76 cm, SH 42 cm, W 76.5 cm, D 73.5 cm

Provenance: private property, Austria

Ref.: Das Interieur, XII, 1911, plate 31; G. Renzi, Il mobile moderno, Gebrüder Thonet Vienna, Jacob & Josef Kohn, Milan, 2008, pp. 172 f



MICHAEL POWOLNY Judenburg 1871 – 1954 Vienna **VEREINIGTE WIENER UND GMUNDNER KERAMIK**

59. OVAL CENTREPIECE WITH FOUR KNEELING PUTTI

Designed by: Michael Powolny, around 1910, cat. raisonné 129

Executed by: Vereinigte Wiener und Gmundner Keramik, around 1913, model no. 293

Marked: WK, GK, 293

Ceramic, white and yellow glaze, excellent original condition

H 18 cm, W 32 cm, D 20 cm

Provenance: private property, Austria

Ref.: E. Frottier, Michael Powolny, Keramik und Glas aus Wien 1900–1950, cat. raisonné 129



MICHAEL POWOLNY Judenburg 1871 – 1954 Vienna **GMUNDNER KERAMIK**

60. CENTREPIECE WITH THREE STANDING PUTTI

Designed by: Michael Powolny, around 1907, cat. raisonné 73
Executed by: Gmundner Keramik, around 1919, model no. 154
Marked: GK, 154, B (painter's mark)

Ceramic, white and polychrome glaze, gilt bowl, excellent original condition
H 16 cm, Ø 30 cm

The centrepiece was also sold by Wiener Werkstätte under article number K 0345.
Provenance: private property, Austria

Ref.: A contemporary photograph is preserved in the Wiener Werkstätte archive at the Austrian Museum of Applied Arts (MAK), Vienna, inv. no. WWF 112-66; E. Frottier, Michael Powolny, Keramik und Glas aus Wien 1900–1950, cat. raisonné no. 73



MICHAEL POWOLNY Judenburg 1871 – 1954 Vienna **WIENER KERAMIK**

61. CRINOLINE

Designed by: Michael Powolny, around 1907

Executed by: Wiener Keramik, around 1913

Marked: M P, 108 (model no.)

Ceramic, white glazed, decorated in black, 2 chips on stand, professionally restored, very good condition

H 31 cm

Provenance: private property, Austria

Ref.: E. Frottier, Michael Powolny, Keramik und Glas aus Wien 1900 - 1950, cat. raisonné no. 57



BERTOLD LÖFFLER Nieder-Rosenthal near Reichenberg/Bohemia 1874 – 1960 Vienna **WIENER KERAMIK/WIENER WERKSTÄTTE**

62. PUTTO WITH TWO CORNUCOPIAS

Designed by: Bertold Löffler, around 1910/11

Executed by: Wiener Keramik, model no. 156, for Wiener Werkstätte, model no. K 513, around 1912

Marked: WK, GK, 156

Ceramic, ivory-coloured glazing, decorated in black, four small chips, very good original condition
H 48.5 cm

Provenance: private property, Germany

Ref.: Wiener Werkstätte archive at the Museum of Applied Arts, Vienna, Inv. Nr. WWF 89-42-1, Fotoband I (WWF 89), W. Neuwirth, Markenlexikon für Kunstgewerbe, vol. 3, Wiener Keramik Modelle 1906–1913, Vienna, 1991, no. 156, p. 131



MICHAEL POWOLNY/BERTOLD LÖFFLER · WIENER KERAMIK/GMUNDNER KERAMIK

63. A PAIR OF CENTREPIECES "FAUN AND GRAPEVINE"

Designed by: Michael Powolny and Bertold Löffler, WV (catalogue raisonné) no. 95, around 1909

1. Executed by: Wiener Keramik, around 1909

Marked: LÖ, MP, WK

Ceramic, glazed in different colours, one flea bite, otherwise excellent condition

2. Executed by: Gmundner Keramik, around 1913

Marked: GK, original label: Gmundner Keramik, 219 (model no.)

Ceramic, glazed in different colours, excellent condition

H 24 cm

Provenance: private property, Austria

Ref.: E. Frottier, M. Powolny, WV 95; Gmundner Keramik sales catalogue, 1915, p. VIII, W 219



DAGOBERT PECHE St. Michael im Lungau 1887 – 1923 Vienna
VEREINIGTE WIENER UND GMUNDNER KERAMIK/WIENER WERKSTÄTTE

64. BOWL

Designed by: Dagobert Peche, 1914

Executed by: Vereinigte Wiener and Gmundner Keramik for Wiener Werkstätte, 1914-19, model no. 0100/KE sh 34

Marked: WK, GK

Ceramic, white body, glazed, very good condition

H 12 cm, Ø 24 cm

Provenance: private property, Austria

Ref.: W. Neuwirth, Wiener Werkstätte catalogue 1928; Wiener Werkstätte anniversary catalogue, 2004, p.18; exhibition catalogue Museum of Applied Arts, Die Überwindung der Utilität - Dagobert Peche und die Wiener Werkstätte, Ostfildern 1998, p. 299, fig. 94



OTTO PRUTSCHER 1880 – Vienna – 1949 **MEYR'S NEFFE, ADOLF**

65. STEM GLASS

Designed by: Otto Prutscher, around 1909
 Executed by: Meyr's Neffe, Adolfov near Vimperk

Clear crystal glass, cut and faceted, excellent condition

H 21.2 cm, Ø 8 cm

Provenance: private property, Austria

Ref.: W. Neuwirth, Vom Jugendstil zum Art Deco, Vienna, 1985, p 65, fig. 40





OTTO PRUTSCHER 1880 – Vienna – 1949 **MEYR'S NEFFE, ADOLF**

66. A PAIR OF STEM GLASSES

Designed by: Otto Prutscher, Vienna, 1909

Executed by: Meyr's Neffe, Adolfov near Vimperk for E. Bakalowits & Söhne, Vienna

Transparent crystal glass, cut and faceted, silver-yellow stained, excellent condition

H 21 cm, Ø 8.5 cm

Provenance: private property, Denmark

Ref.: Deutsche Kunst und Dekoration XXV, 1909-1910, p. 376; Museum of Applied Arts Vienna (MAK), Glass Collection, inv. no. GL 3265 e. f; W. Neuwirth, Glas 1905-1925, vol. 1, p. 65





OTTO PRUTSCHER ATTR. 1880 – Vienna – 1949 **MEYR'S NEFFE, ADOLF**

67. WINEGLASS

Designed by: Otto Prutscher, Vienna, 1910

Executed by: Meyr's Neffe, Adolfov near Vimperk for E. Bakalowitz Söhne, Vienna

Transparent crystal glass, purple overlay, cut décor, flea bites on stem, excellent condition
H 21 cm

Provenance: private property, Austria

Ref.: cf. Deutsche Kunst, XVI, 1908, p. 542 (illus.); Deutsche Kunst und Dekoration, 1907, p. 340 and 1909, p. 376 (illus.); W. Neuwirth, Glas 1905-1925/I, p. 200 (design)



MEYR'S NEFFE, ADOLF

68. STEM GLASS

Designed and executed by: Meyr's Neffe, Adolfov near Vimperk, around 1910

Transparent crystal glass, blue overlay, cut decoration, stained yellow, excellent condition

H 21 cm, Ø 8 cm

Provenance: private property, Austria

Ref.: Passauer Glasmuseum, IV.240



LUDWIG HEINRICH JUNGNICKEL Wunsiedel 1881 – 1965 Vienna **J. & L. LOBMEYR**

69. STEM GLASS

Designed by: Ludwig Heinrich Jungnickel (shape) and Carl or Paul Thomas (décor), before 1914

Executed by: Meyr's Neffe, Adolfov near Vimperk (shape), and glass refinery in Kamenický Šenov (décor) for J. & L. Lobmeyr, Vienna

Colourless glass, frosted, painting in black, excellent condition

H 18.5 cm

This stem glass, decorated with mythical creatures, was shown in 1914 at the Werkbund exhibition in Cologne and in 1916 at the Austrian arts-and-crafts and fashion exhibition in Stockholm.

Provenance: private property, Austria

Ref.: J. & L. Lobmeyr, *Between Vision and Reality, Glassware from the MAK collection, 20th/21st century*, Austrian Museum of Applied Arts (MAK) Vienna and Prestel publishing house (Munich, Berlin, London, New York), 2009, fig. 38c, p. 76 f



HERBERT GURSCHNER Innsbruck 1901 – 1975 London

70. IN THE PARK

Verso: HERBERT GURSCHNER TIROL (original woodcut on paper)

Oil on canvas, cleaned and varnished, newly framed, excellent condition

Dimensions: H 47 cm, W 62.5 cm
Frame dimension: H 54 cm, W 69 cm

Provenance: estate of Herbert Gurschner

Ref.: H. Fuchs, Die österreichischen Maler des 20. Jahrhunderts, vol. 2, Vienna, 1986, ch. 30; F. Novotny, Oskar Laske, Vienna, 1954



OTTO PRUTSCHER 1880 – Vienna – 1949 **GEBRÜDER THONET**

71. OVAL DESK

Designed by: Otto Prutscher, Vienna, around 1910
Executed by: Gebrüder Thonet, mod. no. 8094 C

Beech and beech bentwood, surface cleaned and slightly repolished, very nice original condition

H 78 cm, W 100 cm, D 70 cm

Provenance: private property, Austria

Ref.: cf. J. Uhlir, Vom Wiener Stuhl zum Architektenmöbel, Vienna, 2009, p. 175



71. Pfaf Blumenschiel von Otto Prutscher für die Wiener Thonet aus dem Jahre 1911, Kat. 76, 9475 bis 9479



OTTO PRUTSCHER 1880 – Vienna – 1949 **GEBRÜDER THONET**

72. A PAIR OF ALMOST IDENTICAL TABLES

Designed by: Otto Prutscher, Vienna, around 1910

Executed by: Gebrüder Thonet, Vienna

Marked: paper labels on the underside of table top/foot

Beech bentwood and plywood, natural beech colour and slightly repolished/dyed to cherry and polished, brass ring, original linoleum on the base, one table with (renewed) glass top, both in very good condition

H 78 cm, Ø 70.5 cm; H 78 cm, Ø 59 cm

Provenance: private property, Austria

Ref.: G. Renzi, *Il mobile moderno*, Gebrüder Thonet Vienna, Jacob & Josef Kohn, Milano, 2008, fig. Café Lurion Vienna, model nos. 8350 C/r and 8350 L/r, pp. 272, 273





OTTO PRUTSCHER 1880 – Vienna – 1949 **WIENER WERKSTÄTTE**

73. FIVE-BRANCHED CANDELABRUM

Designed by: Otto Prutscher, Vienna 1911

Executed by: Wiener Werkstätte, model no. M 1927

Marked: rose mark, WIENER WERK STÄTTE (3 lines), master's mark OP (Otto Prutscher)

Brass, bead-and-reel decoration, remains of gold plating

H 50 cm, Ø 27.5 cm

Executed on 14 Oct. 1911 and sold on 1 Sept. 1918 for 600 kronas

Provenance: private property, Germany

Ref.: Wiener Werkstätte archive at the Austrian Museum of Applied Art (MAK), Vienna, sample book of Wiener Werkstätte, WW F 98, p. 69; Die Kunst, XXXXVIII, 1923, p. 69 and WW sample book 34, metal 6, p 1927.



OTTO PRUTSCHER 1880 – Vienna – 1949 **WIENER WERKSTÄTTE**

74. TABLE LAMP

Designed by: Otto Prutscher, Vienna, 1909
Executed by: Wiener Werkstätte, model no. M 1275

Alpacca, chased and silver plated; around the base 40 ivory squares mounted in metal; crowned by a female nude carved from white ivory; four light bulb fittings, newly rewired, silver plating slightly rubbed at some points, silk lampshade renewed, excellent original condition.

H 67 cm, Ø 37 cm

Only one piece was ever made and sold for the more than impressive price of 1,200 Kronen.

Sincere thanks to Ms Hermi Schedlmayer (author of an Otto Prutscher catalogue raisonné) for the valuable information.
Provenance: private collection, Germany

Ref.: A contemporary photograph is preserved in the Wiener Werkstätte photographic archive at the Austrian Museum of Applied Arts (MAK), Vienna, inv. no. WWF 97-46-4



OTTO PRUTSCHER 1880 – Vienna – 1949 **WIENERBERGER TONWARENFABRIK**

75. UMBRELLA STAND

Designed by: Otto Prutscher, around 1916

Executed by: Wienerberger Keramik, model no. 4418

Marked: impressed factory mark of Wienerberger Tonwarenfabrik, model no. 4418

Ochre body, multi-coloured glaze, professionally restored crack in the upper part, very good condition

H 62 cm, W 34 cm, Æ 23.5 cm

Provenance: private property, Austria

Ref.: Wienerberger Ziegelfabriks- und Baugesellschaft sales catalogue, 1926, model no. 4418



OTTO PRUTSCHER 1880 – Vienna – 1949 **WIENERBERGER TONWARENFABRIK**

76. FLOWER CACHEPOT

Designed by: Otto Prutscher, around 1916

Executed by: Wienerberger Keramik, model no. 5001

Marked: impressed factory mark of Wienerberger Tonwarenfabrik, model no. 5001

Ochre body, multi-coloured glaze, very good condition

H 20 cm, Æ 35 cm

Provenance: private property, Austria

Ref.: Wienerberger Ziegelfabriks- und Baugesellschaft sales catalogue, 1926, model no. 5001



GUSTINUS AMBROSI Eisenstadt 1893 – 1975 Vienna

77. THE PRODIGAL SON

Signed and dated: Ambrosi 1911

Bronze, very nice original patina, excellent original condition

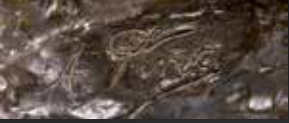
H 20 cm

The sculpture is an early masterpiece by Ambrosi. To my knowledge this is the only casting.

Provenance: private collection, Austria

Ref.: Karpfen F., Gustinus Ambrosi, Vienna, 1923, p. 92. cf. clay model "Prodigal Son"/A 10 in Österreichische Galerie Belvedere/Ambrosi Museum, inv. no. A 158





ALFREDO PINA Milan 1887– 1966 Mesves-sur-Loire

78. THE PRODIGAL SON

Signed: Alfredo Pina around 1910

Bronze, patinated, very nice original patina, excellent condition

H 42 cm

Provenance: private property, United Kingdom

Ref.: U. Thieme/F. Becker/H. Vollmer (ed.), Allgemeines Lexikon der bildenden Künstler, Von der Antike bis zur Gegenwart, vol. 27, Leipzig, 1933, p. 50





FRIEDRICH GORNIK Prävali, Slovenia 1877 – 1943 Vienna

79. SALAMANDER BOWL

Designed by: Friedrich Gornik, Vienna, around 1910

Marked: Gornik 19... (rest illegible)

Bronze, ornamental relief, very good original condition

H 19.5 cm, Ø 27.5 cm

Provenance: private property, Austria

Ref.: U. Thieme/F. Becker/F.C. Willis (ed.), Allgemeines Lexikon der bildenden Künstler, Von der Antike bis zur Gegenwart, vol. 14, Leipzig, 1921, p. 402





STEPHAN CONEYE 1907 – Vienna – 1978

80. DRAGON

Designed and executed by: Stephan Coneye, Vienna, 1949
Marked: Coneye, 1949



Ceramic, red body, colourful glaze, some very small retouches, restoration on one foot, very good original condition

H 14.5 cm, L 42 cm

Provenance: private property, Austria



JOSEF HOFFMANN Brtnice 1870 – 1956 Vienna **WIENER WERKSTÄTTE**

81. VASE

Designed by: Josef Hoffmann, Vienna, around 1920

Executed by: Wiener Werkstätte, model no. S 5220, S va 9

Marked: JH, WIENER WERK STÄTTE (3 lines) MADE IN AUSTRIA, 900, the symbols of Mercury (official Austrian export mark), triangle (most probably American import mark)

Silver, chased and hammered, hand polished, very good original condition

H 27 cm, Ø 8 cm

Provenance: private collection, USA

Ref.: Wiener Werkstätte archive at the Museum of Applied Arts (MAK), Vienna, design drawing inv. no. KI 11981-3-1





JOSEF HOFFMANN Brtnice 1870 – 1956 Vienna **WIENER WERKSTÄTTE**

82. SILVER COFFEE SET

Consisting of: coffee pot, sugar bowl with lid, sugar tongs, round tray

Designed by: Josef Hoffmann, Vienna, around 1920

Executed by: Wiener Werkstätte, model nos. S 5251-5255, 1920/24

Marked: JH, rose mark, WIENER WERK STÄTTE (3 lines), WW, Austrian hallmark - head of Diana (A for Vienna, 2 for 900/1000), 900, A (hallmark for Vienna), made in Austria

Silver, chased and hammered, finely carved ivory handles, finest quality of silversmith craftsmanship, excellent original condition

Tray: Ø 37 cm

Coffee pot: H 20 cm

Provenance: private collection, Austria

Ref.: A contemporary photograph is preserved in the Wiener Werkstätte photographic archive at the Austrian Museum of Applied Arts (MAK), Vienna, inv. no. WWF 96-237-3, model nos. S 5251-5255; Wiener Werkstätte archive at the Museum of Applied Arts (MAK), Vienna, design drawing inv. no. KI 12057-12-2 and KI 12057-12-1



MARIA CYRENIUS Lockstedt 1872 - 1959 Klosterneuburg

83. ENAMEL PICTURE (FAIRYTALE MOTIF)

Signed on reverse: M. Cyrenius, Wien, XIX Nusswaldg 19

Copper, enamel paint, original frame, excellent original condition

Dimensions: H 9 cm, W 7 cm

Frame dimensions: H 12.5 cm, W 10.5 cm

Provenance: private property, United Kingdom

Ref.: H. Fuchs, Die österreichischen Maler des 20. Jahrhunderts, vol. 1, Vienna, 1985, ch. 144; F. Novotny, Oskar Laske, Vienna, 1954



ALFRED POELL Oberndorf near Salzburg 1867 – 1929 Gmunden

84. LANDSCAPE

Signed and dated on lower left: ALFRED POELL 1920

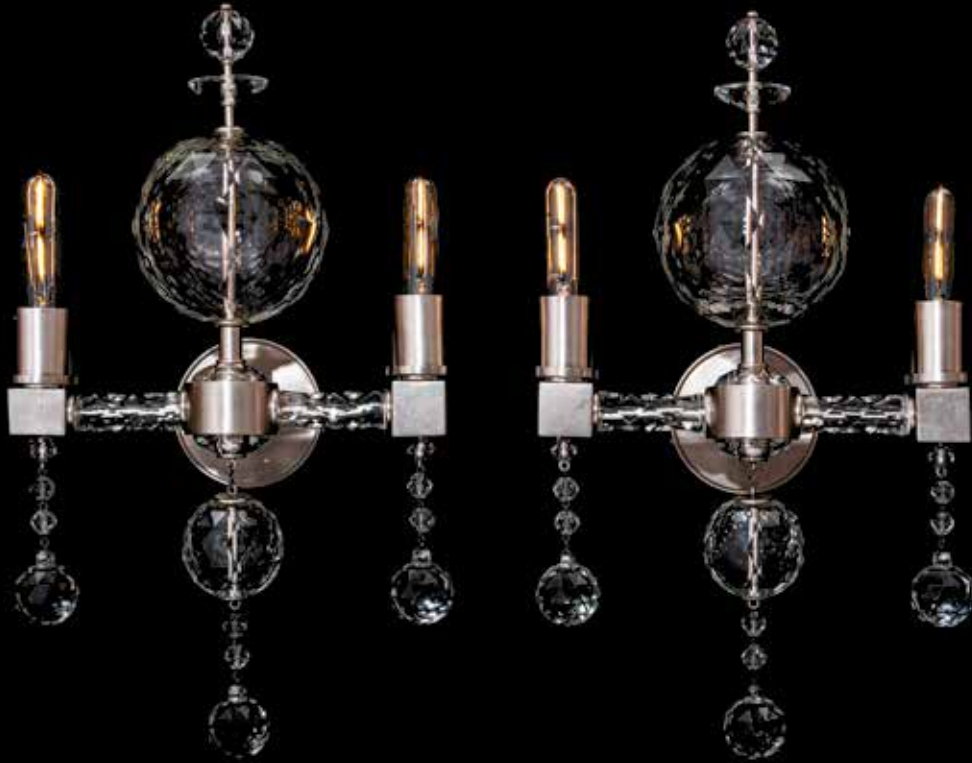
Oil on canvas, doubled, cleaned, newly varnished and framed, good condition

Dimensions: H 97 cm, W 85 cm

Frame dimensions: H 106 cm, W 94 cm

Provenance: private property, Austria

Ref.: H. Fuchs, *Die österreichischen Maler des 19. Jahrhunderts*, vol. 3, Vienna, 1973, ch. 92; F. Novotny, *Oskar Laske*, Vienna, 1954



LEOPOLD BAUER ATTR. Jägerndorf 1872 – 1938 Vienna **E. BAKALOWITS SÖHNE**

85.1. A PAIR OF WALL SCONCES / 85.2. RARE AND EXTRAORDINARY CHANDELIER

Designed by: Leopold Bauer attr., Vienna, around 1930
Executed by: E. Bakalowits Söhne, Vienna

Nickel-plated brass, intricately cut glass bowls, upper large glass bowl with crack, polished glass beads, newly electrified, sleeves added to sockets, very nice original condition

Wall sconces: H 57 cm, W 34 cm, D 22 cm
Chandelier: H 120 cm + 45 cm chain, Ø 71 cm

This chandelier and the two matching wall sconces are of the finest quality. The finishing of both the glass and metal components is second to none and the design stand out for its ingenuity. Leopold Bauer used a similarly impressive glass bowl boasting an unusual "triangular cut" for a chandelier made by E. Bakalowits Söhne around 1900. We presented it at TEFAF NY Spring 2018, catalogue no. 4.

Provenance: private property, Austria

Ref.: cf.: The bel etage gallery exhibiting at the TEFAF New York Spring 2018, cat. no. 4, p. 10f





86. A PAIR OF WALL SCONCES

Designed and executed: Vienna around 1925/30

Brass, polished and stove-enamelled, wiring renewed

Excellent Viennese craftsmanship

H 53 cm, W 15.5 cm

Provenance: private property, Austria



FRANZ HAGENAUER 1906 – Vienna – 1986 **WERKSTÄTTE HAGENAUER**

87. FLOOR LAMP "FLAMINGO"

Designed by: Franz Hagenauer

Executed by: Werkstätte Hagenauer, Vienna, 1950, model no. L 42

Marked: paper label on base "Flamingo, Hagenauer Wien"

Aluminium, brass, wrought iron, newly rewired, excellent original condition

H 150 cm, W 16 cm, D 50 cm

Provenance: private property, France

Ref.: A contemporary photograph is preserved in the Hagenauer archive at the Austrian Museum of Applied Arts (MAK), Vienna, inv. no. HAF 11-2



KARL HAGENAUER 1898 – Vienna – 1956 **WERKSTÄTTE HAGENAUER**

88. TENNIS PLAYER

Designed by: Karl Hagenauer, Vienna, 1920s

Executed by: Werkstätte Hagenauer, Vienna, 1920s

Marked: WHW in circle, MADE IN VIENNA AUSTRIA, ATELIER HAGENAUER WIEN, (difficult to read)

Brass, nickel-plated, very good original condition

H 28 cm

Sincere thanks to Mr. Karl Schmidt, former master-workman at the Hagenauer Werkstätte for his help in dating this artefact.

Ref.: T. Bröhan, *Metallkunst der Moderne*, Berlin, 2001, p. 516, fig. 459





FRANZ HAGENAUER 1906 – Vienna – 1986 **WERKSTÄTTE HAGENAUER**

89. HORSE

Designed by: Franz Hagenauer, Vienna

Executed by: Werkstätte Hagenauer, Vienna, around 1934, model no. 3802

Marked: WHW in a circle, MADE IN AUSTRIA, HAGENAUER WIEN

Brass, nickel-plated, excellent original condition

H 24.5 cm, W 32 cm

Sincere thanks to Dr. Maria-Luise Jesch, Austrian Museum of Applied Arts Vienna, Hagenauer archive, for her valuable assistance.

Provenance: private property, United Kingdom



FRANZ HAGENAUER 1906 – Vienna – 1986 **WERKSTÄTTE HAGENAUER**

90. CLOCK

Designed by: Franz Hagenauer, Vienna, 1928

Executed by: Werkstätte Hagenauer, Vienna, 1981-1987, model no. 1145-21

Marked: WHW in circle, MADE IN AUSTRIA, HAGENAUER WIEN

Brass, nickel-plated, original battery-operated quartz movement, excellent original condition

H 38 cm, Ø 12.5 cm

Sincere thanks to Dr. Maria-Luise Jesch, Austrian Museum of Applied Arts Vienna, Hagenauer archive, for her valuable assistance.

Provenance: private property, USA



WERKSTÄTTE HAGENAUER

91. MIRROR

Designed by: Werkstätte Hagenauer, Vienna, 1920s

Executed by: Werkstätte Hagenauer

Marked: WHW in a circle, MADE IN AUSTRIA, HAGENAUER WIEN

Brass, nickel-plated, professional repair on leg near the base, very good original condition
H 34.5 cm, Ø 17 cm

Provenance: private property, USA

Ref.: Monika Wenzl-Bachmayer (ed.), Hagenauer. Wiener Moderne und Neue Sachlichkeit, Vienna, 2011, p. 18.



KARL HAGENAUER 1898 – Vienna – 1956 **WERKSTÄTTE HAGENAUER**

92.1.BIRD BOWL / 92.2.BIRD BOWL

Designed by: Karl Hagenauer, Vienna, 1930s
Executed by: Werkstätte Hagenauer
Marked: WHW in a circle, MADE IN AUSTRIA, HAGENAUER WIEN

Brass, nickel-plated/brass, excellent original condition
92.1: H 17 cm, W 27.5 cm; 92.2: H 16 cm, B 25 cm

Provenance: private property, United Kindom / Switzerland

Ref.: Monika Wenzl-Bachmayer (ed.), Hagenauer. Wiener Moderne und Neue Sachlichkeit, Vienna, 2011, p. 43





ERNST HUBER 1895 – Vienna – 1960

93. CHAPEL IN DROSENDORF

Signed and dated lower right: HUBER ERNST 1920

Oil on cardboard, mixed media, cleaned and varnished, framed, very good condition

Dimensions: H 50.5 cm, W 72 cm

Frame dimensions: H 63 cm, W 85 cm

Provenance: private property, Austria

Ref.: H. Fuchs, Die österreichischen Maler, vol. 1, Wien, 1985, K 111; Thieme-Becker, Allgemeines Lexikon der bildenden Künstler, vol. 18, Leipzig, 1925, p. 6; B. Grimschitz, Ernst Huber, Salzburg, 1961



WERKSTÄTTE HAGENAUER

94. THREE BIRDS
from the "THE ZOO" series

Designed and executed by: Werkstätte Hagenauer, Vienna, from 1945 to the 1960s
Marked: MADE IN AUSTRIA, HANDMADE, HAGENAUER WIEN (pheasant)

Walnut and maple, hand-carved, stained, brass, pheasant with repair on tail, very good original condition

Hoopoe: H 24 cm, L 21.5 cm

Stork: H 27 cm, L 14 cm

Pheasant: H 13.5 cm, L 26 cm

Provenance: private property, Italy

Ref.: Monika Wenzl-Bachmayer (ed.), Hagenauer. Wiener Moderne und Neue Sachlichkeit. Vienna, 2011, p. 70



KARL HAGENAUER 1898 – Vienna – 1956 **WERKSTÄTTE HAGENAUER**

95. DANCER

Designed by: Karl Hagenauer, Vienna

Executed by: Werkstätte Hagenauer, Vienna, 1936-1960, model no. 4212

Marked: WHW in a circle, ATELIER HAGENAUER WIEN, MADE IN VIENNA AUSTRIA

Wood, carved, repair on the dress, brass, very good original condition

H 30.5 cm

Sincere thanks to Dr. Maria-Luise Jesch, Austrian Museum of Applied Arts Vienna, Hagenauer archive, for her valuable assistance.

Provenance: private property, United Kingdom

Ref.: A contemporary photograph is preserved in the Hagenauer archive at the Austrian Museum of Applied Arts (MAK), Vienna, inv. no. HAF 405





FRANZ HAGENAUER 1906 – Vienna – 1986 **WERKSTÄTTE HAGENAUER**

96.1. HUNTER / 96.2. FISHERMAN

Designed by: Franz Hagenauer, Vienna, before 1960 / after 1961

Executed by: Werkstätte Hagenauer, Vienna, from 1960 to 1962 / in the 1960's

Marked: WHW in circle, MADE IN AUSTRIA, HANDMADE/WHW in a circle, Handmade, MADE IN AUSTRIA, HAGENAUER WIEN

Walnut, stained in various colours, bristles, brass, rifle renewed/ fishing rod and fish replaced, excellent original condition

Hunter: H 30 cm ; **Fisherman:** H 21 cm

Sincere thanks to Dr. Maria-Luise Jesch, Austrian Museum of Applied Arts Vienna, Hagenauer archive, for her valuable assistance.

Provenance: private property, Austria/Australia





FRANZ HAGENAUER 1906 – Vienna – 1986 **WERKSTÄTTE HAGENAUER**

97.1. ZEBRA / 97.2. HORSE

Designed by: Werkstätte Hagenauer / Franz Hagenauer

Executed by: Werkstätte Hagenauer, Vienna, around 1936, model no. 4357 / Werkstätte Hagenauer, Vienna, from 1959 to 1968

Marked: WHW in a circle, MADE IN AUSTRIA, HAGENAUER WIEN/ WHW in a circle, HANDMADE, MADE IN AUSTRIA, HAGENAUER WIEN

Solid Zebrano wood, carved, repair on the tale, very good original condition/ Solid walnut, carved, bristles, mane with missing parts, very good original condition

Zebra: H 13.5 cm, W 17.5 cm; **Horse:** H 13 cm, W 16 cm

Sincere thanks to Dr. Maria-Luise Jesch, Austrian Museum of Applied Arts Vienna, Hagenauer archive, for her valuable assistance.

Provenance: private property, United Kingdom/Austria



FRANZ HAGENAUER 1906 – Vienna – 1986 **WERKSTÄTTE HAGENAUER**

98. CLOCK

Designed by: Franz Hagenauer, Vienna, 1930s

Executed by: Werkstätte Hagenauer, Vienna, 1930s

Marked: WHW in a circle, ATELIER HAGENAUER WIEN, MADE IN AUSTRIA

Solid walnut, carved and dyed dark brown, left foot partially replaced, original 7-day movement, very nice original condition
H 16 cm, W 26.5 cm

Sincere thanks to Mr. Karl Schmidt, former master-workman at the Hagenauer Werkstätte for his help in dating this artefact.

Provenance: private property, United Kingdom



KARL HAGENAUER 1898 – Vienna – 1956 **WERKSTÄTTE HAGENAUER**

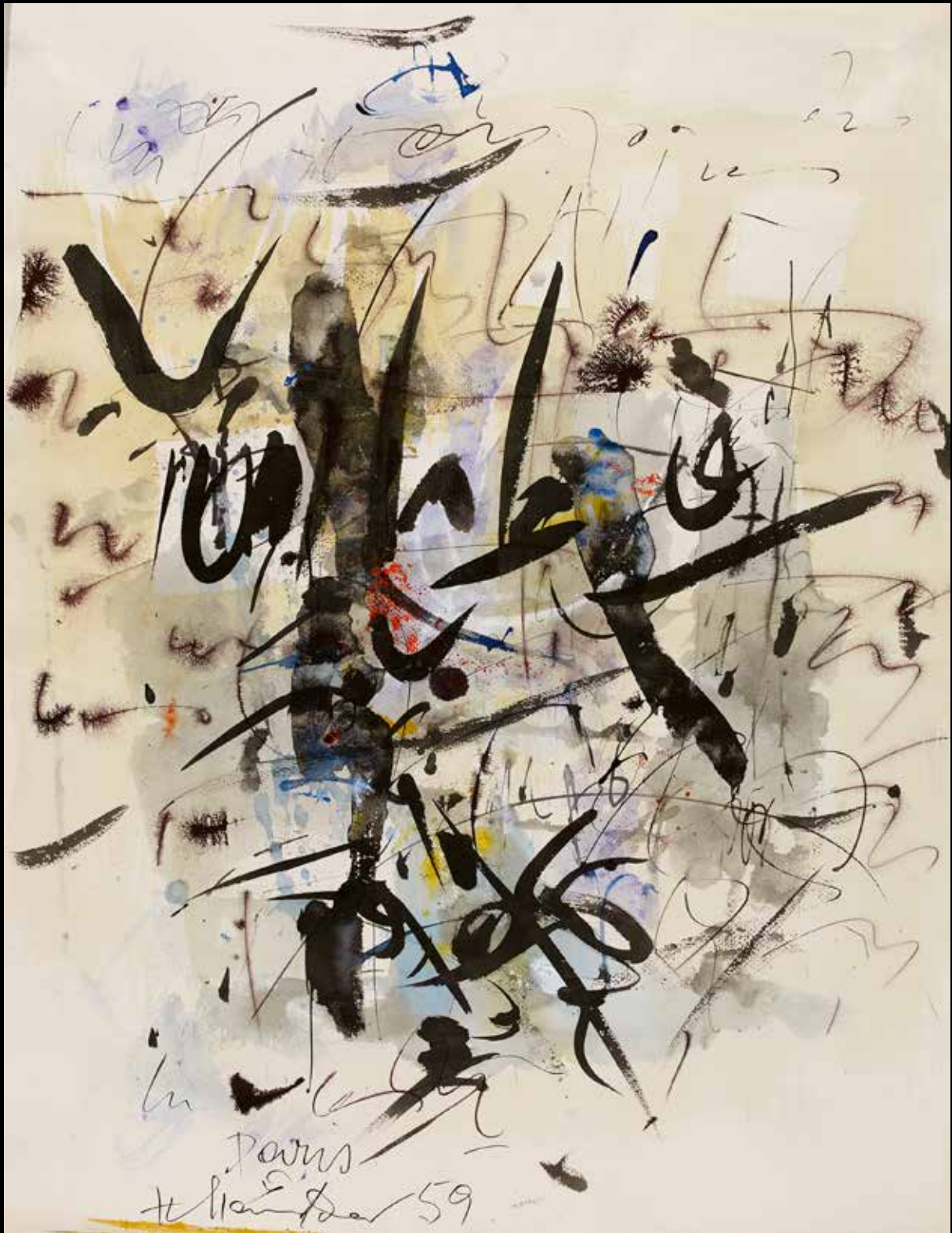
99. MIRROR

Designed by: Karl Hagenauer, Vienna
Executed by: Werkstätte Hagenauer, Vienna, around 1928
Marked: WHW in a circle, MADE IN AUSTRIA, HANDMADE

Copper, brass, original mirror, very good original condition
H 58 cm, W 53 cm

Sincere thanks to Dr. Maria-Luise Jesch, Austrian Museum of Applied Arts Vienna, Hagenauer archive, for her valuable assistance.

Provenance: private property, USA



HANS STAUDACHER St. Urban at Lake Ossiach 1923

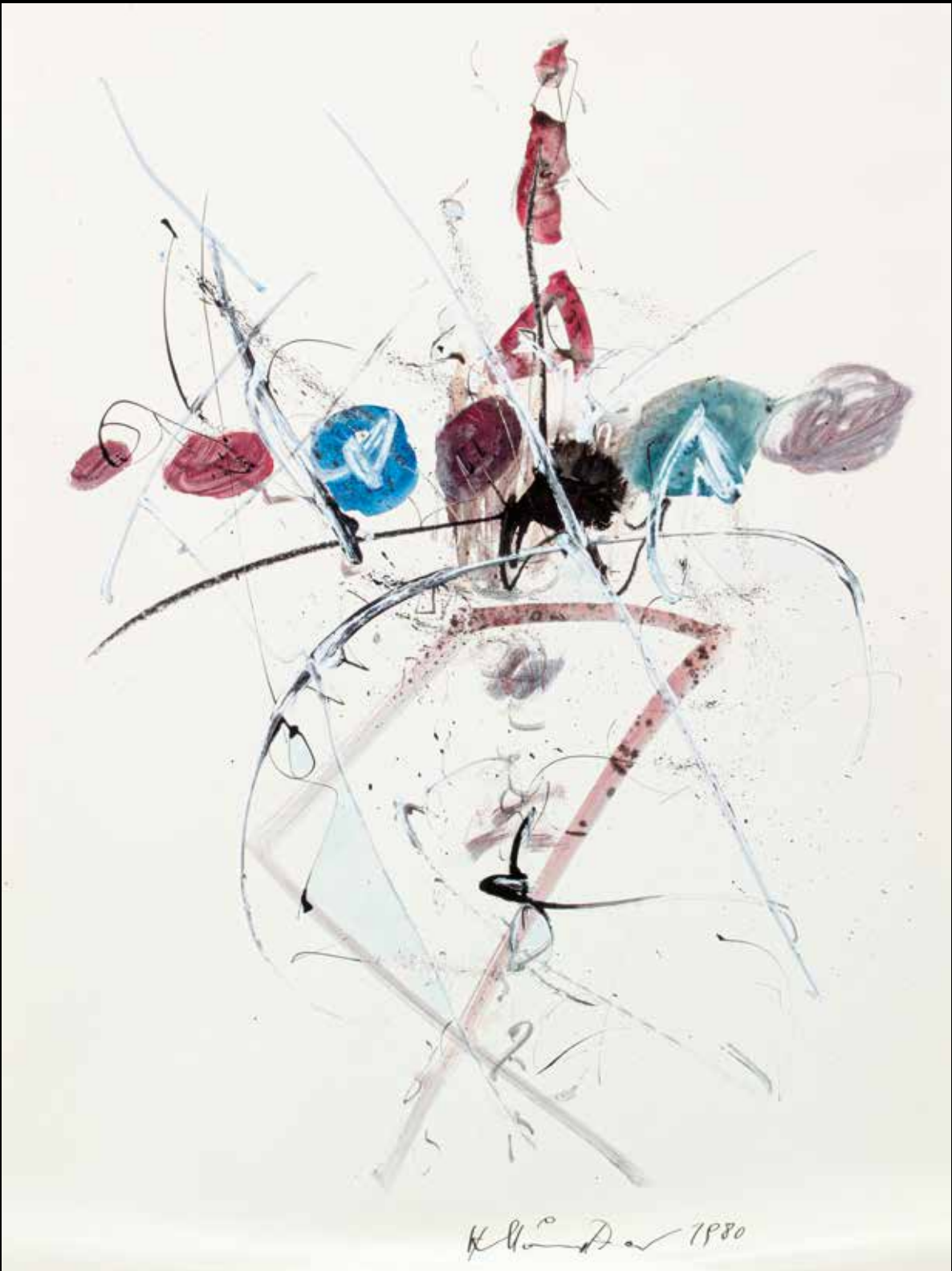
100. UNTITLED

Dated and signed on lower left: Paris H. Staudacher 59

Mixed media on INGRES, CANSON & MONTGOLFIER FRANCE (watermark) newly framed, very good condition

Dimensions: H 62.5 cm, W 48.5 cm
Frame dimension: H 85 cm, W 70 cm

Provenance: private property, Germany



HANS STAUDACHER St. Urban at Lake Ossiach 1923

101. UNTITLED

Dated and signed at the bottom: H. Staudacher 1980

Mixed media on paper, newly framed, very good condition

Dimension: H 63 cm, W 46.5 cm

Frame dimension: H 84 cm, W 64 cm

Provenance: private property, Netherlands



HANS STAUDACHER St. Urban at Lake Ossiach 1923

103. "ER KANNS ODER ER KANNS NICHT" (He can do it or he can't)

Dated and signed on lower right: Hans Staudacher 1988

Mixed media on cardboard, newly framed, very good condition

Dimensions: H 30 cm, W 42cm
Frame dimensions: H 42 cm, W 54cm

Provenance: private property, Germany

INDEX

KÜNSTLER UND FIRMAN / ARTISTS AND COMPANIES	KAT. NR. / CAT. NO.	SEITE / PAGE
AMBROSI, GUSTINUS	77	84
AUCHENTALLER, JOSEF MARIA	17.1, 18.1, 18.2	22-23
BAKALOWITS SÖHNE, E.	24, 25, 26, 43, 44, 45, 85.1, 85.2	29-31, 48-50, 92-93
BAUER, LEOPOLD	43, 44, 85.1, 85.2	48-49, 92-93
CONEYE, STEPHAN	80	87
CYRENIUS, MARIA	83	90
DIETL, FRITZ	53	58-59
ENGELHART, JOSEF	55	61
FIX, ROBERT	3, 14	7, 19
GMUNDNER KERAMIK	60, 63	67, 70
GORNIK, FRIEDRICH	79	86
GURSCHNER, GUSTAV	37, 38, 39.1, 39.2, 40	42-45
GURSCHNER, HERBERT	70	77
HABLIK, WENZEL	53	58-59
HACKER, MORITZ	36	41
HAGENAUER, FRANZ	87, 89, 90, 96.1, 96.2, 97.2, 98	95, 97-98, 104-106
HAGENAUER, KARL	88, 91, 92.1, 92.2, 95, 99	96, 99-100, 103, 107
HANCKE, RUDOLF	53	58-59
HERRMANN, J. & J.	52	57
HOFFMANN, JOSEF	46, 47, 48, 49.1, 49.2, 50, 51, 56, 58, 81, 82	51-56, 62, 64-65, 81-82, 88-89
HRADETZKY, E.	53	58-59
HUBER, ERNST	93	101
JUAN, GOLFE	1	5
JUNGNICKEL, LUDWIG HEINRICH	69	76
K. & K. HOF-SILBER- UND CHINASILBERWARENFABRIK	36	41
K. K. KUNSTERZGIESSEREI	39.1, 40	44-45
KIRSCHNER, MARIE	20	25
KNOX, ARCHIBALD	41, 42	46-47
KOHN, J. & J.	5, 6, 8, 27, 46, 47, 48, 51, 56, 57, 58	10, 11, 13, 32, 51-53, 56, 62-65
KRASNIK, ANTOINETTE	22	27
LIBERTY & CO.	41, 42	46-47
LOBMEYR, J. & L.	69	76
LÖFFLER, BERTOLD	62, 63	69-70
LOOS, ADOLF	11, 30	16, 35
LÖTZ WITWE	20, 21, 22, 23, 24, 31, 32, 33, 34, 43, 44, 45	25-29, 36-39, 48-50
LUDWIG, RICHARD	9, 10	14-15
MASSIER, CLEMENT	1	5
MEYER'S NEFFE, ADOLF	19, 65, 66, 67, 68	24, 72-75
MOLL, CARL	54	60
MOSER JUN., CARL	15	20
MOSER, KOLOMAN	6, 8, 19, 26, 45	11, 13, 24, 31, 50
MÜLLER, RICHARD	53	58-59
OLBRICH, JOSEPH MARIA		
O'LYNCH OF TOWN, KARL	16	21
PECHE, DAGOBERT	64	71
PINA, ALFREDO	78	85
POELL, ALFRED	84	91
POHL, FRITZ		
PORTOIS & FIX	3, 13, 14	7, 18-19
POWOLNY, MICHAEL	59, 60, 61, 63	66-68, 70
PRUTSCHER, OTTO	65, 66, 67, 71, 72, 73, 74, 75, 76	72-74, 78-83
QUITTNER, RUDOLF	2	6
SCHEID, GEORG ADAM	17.1, 17.2, 18.1, 18.2	22-23
SCHMIDT, FRIEDRICH OTTO	12, 30	17, 35
SCHULE PROF. KOLOMAN MOSER	22	27
SIEGEL, GUSTAV	5, 27	10, 32
SIKA, JUTTA	25, 26	30-31
STAUDACHER, HANS	100, 101, 102, 103	108-111
STREJC, JOSEF	53	58-59
THONET	7, 71, 72	12, 78-79
U. P. WERKE	11	16
VEREINIGTE WIENER UND GMUNDNER KERAMIK	59, 64	66, 71
VOGELER, HEINRICH	4	8-9
WERKSTÄTTE HAGENAUER	87, 88, 89, 90, 91, 92.1, 92.2, 94, 95, 96.1, 96.2, 97.1, 97.2, 98, 99	95-100, 102-107
WIENER KERAMIK	61, 62, 63	68-70
WIENER WERKSTÄTTE	49.1, 49.2, 50, 62, 64, 73, 74, 81, 82	54-55, 69, 71, 80-81, 88-89
WIENERBERGER TONWARENFABRIK	75, 76	82-83
WILKENS & SÖHNE	4	8-9
WISINGER-FLORIAN, OLGA	29	34





Antiktheater



bel etage